



# Welsh Government University Program

23/05/2023



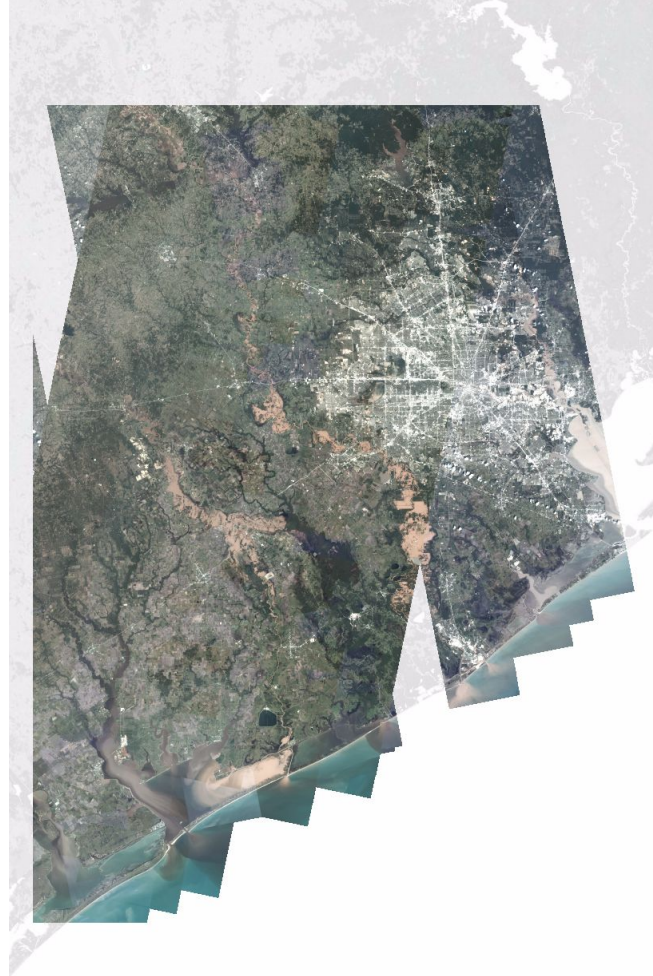
Northern Manitoba, Canada – November 9, 2016





## Agenda

1. Team Introductions
2. New Contract Overview
3. What's changing?
4. Delivery Options
5. Professional Services
6. Retrospective University Program
7. Discussion Points
8. Closing remarks/questions





# Planet Team

**Tech Support**  
[support.planet.com](https://support.planet.com)



**Fiona Williams**  
Account Executive,  
Government UK&I



**Luis Peraza**  
Professional Services  
Sr. Manager



**Amber Swan**  
Professional Services  
Project Manager



**Luisa Teixeira**  
Program Manager



**Dominik Götz**  
Customer Success  
Regional Manager EMEA



**Thamires De Souza  
Ferreira**  
Customer Success  
Manager, Education and  
Research-EMEA



**Vita Sandhu**  
Customer Success  
Engineer



**Friedemann Scheibler**  
Professional Services  
Solutions Engineer



**Guyon Duifhuizen**  
Professional Services  
Solutions Engineer



**Marc Bernabeu Peña**  
Sr. Customer Success  
Manager EMEA





# Welsh Government University Program -Planet Contract Overview

## Products

- Imagery Sources: PlanetScope and Rapid Eye, SkySat
- PlanetScope All Time Access +Download
- RapidEye Archive All Time Access + Download + Premium Clipping
- SkySat Archive Older than 6 months
- Automated Basemaps Streaming and Download (SR Basemaps depend on availability-No SR basemaps are generated on Demand).



8 licences / year

2,000.00 Users/ Campus

1B Tile Views

Download Area Quota for PS/RE  
Scenes and for Basemaps: 100M  
sqkm

200,000 sqkm for SkySat Archive

Premium Clipping

30th of March 2025



# + What's changing on E&R Campus Packages?

Changes	Previous Contract	Current Contract
User <b>Licenses</b>	100 users/ University	<b>2,000</b> users/ University
PlanetScope/RE/ Basemaps Download Quota	30M sqkm with premium clipping	<b>100M sqkm</b> with premium clipping
SkySat Archive Quota	SkySat imagery was not included	<b>200,000.00 sqkm Global SkySat Archive Imagery</b> 6 months older or more (on a rolling basis)
Tile View	Unlimited	1,000,000,000.00 tiles/ year



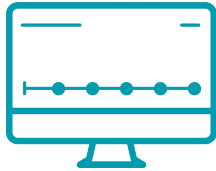
# Welsh Government University Program -Planet Tech Support

Support Offering	E&R
<a href="#">Planet Help Center</a>	✓
<a href="#">Planet Community</a>	✓
<a href="#">Planet University</a>	✓
Maximum Number of Designated Customer Contacts	1
Local Business Hour Access to Technical Support	
24/7/365 Phone Support for Urgent Issues	
Target First Response Times ( <a href="#">Priorities</a> ) Urgent High Normal Low	
Status Update Frequency ( <a href="#">Priorities</a> ) Urgent High Normal Low	
Designated Customer Success Manager	



# +Welsh Government University Program -Planet

## Delivery Options



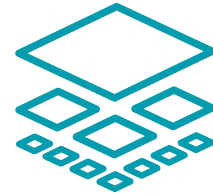
### PLANET APPS

Web-based user interface for  
browsing & downloading  
Planet imagery



### PLANET APIS

REST API access  
to Planet imagery



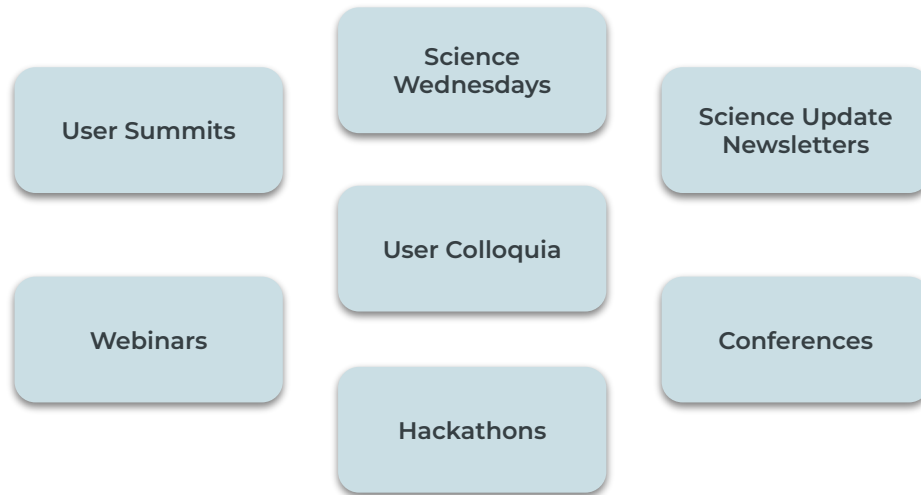
### GIS INTEGRATIONS

An embedded UI experience  
within your GIS software

# +Welsh Government University Program -Planet

## Science Community and Engagements

E&R



Stay up to date on Science updates by signing up for the newsletter at <https://learn.planet.com/Science-newsletter-subscription.html>





# Welsh Government University Program -Planet Co- Marketing Opportunities

Quotes & Logos

Blog Post

Video Testimonial

Case Studies

Webinar or Conference

Press Release

Social Promotion

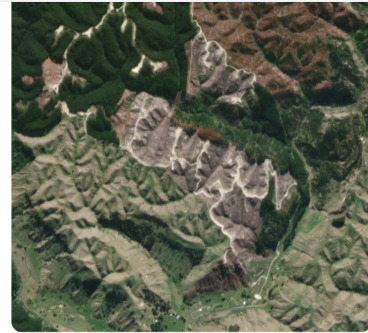
## STORIES



### Detecting and Eradicating Invasive Grass Affecting Pasture and Ranch Land

by [Shelby Parks](#) on Jan 24, 2022

Invasive plants such as cheatgrass, medusahead, and ventenata are wreaking havoc with ranchers, farmers, land managers, and transport companies around the world, and driving concern among environmental groups that fear the impacts on



### Case Study:

### Automated Cutover Mapping with Satellite Imagery

Pan Pac automated the collection and reporting of harvested areas by using high frequency, 3.7 meter PlanetScope imagery. This resulted in significant time and cost savings for their team, streamlined reporting, and improved data accuracy.

Download case study [here](#).

# +Welsh Government University Program -Planet Planet University

## Planet University

- On-demand onboarding and advanced educational resources for all users and partners
- Ongoing live webinars
- Videos, courses, guides, tipsheets, and more

## Planet Community

- Community forum for users and partners to ask questions, join groups, attend events
- Product ideation forum
- Product updates and release notes

The image shows two screenshots of the Planet website. The top screenshot is the Planet University landing page. It features a dark header with the Planet logo and 'University' text. Below the header, there is a welcome message: 'Welcome to Planet University! These courses are designed to give you everything you need to start using Planet data. Get started by [taking our video tour](#).' A secondary message asks for feedback: 'Have feedback on our platform or courses? Ideas for future resources? Let us know [how we're doing](#).' Below this are three buttons: 'All Courses', 'Webinars & Events', and 'Community'. The main content area includes the Planet logo with the tagline 'See Change. Change the World.', a 'NICFI SATELLITE DATA PROGRAM' logo, and a satellite image of a globe.

The bottom screenshot is the Planet Community landing page. It has a dark header with the Planet logo and 'Community' text. The navigation bar includes 'FORUM', 'IDEAS', 'PRODUCT ANNOUNCEMENTS', 'EVENTS', 'GROUPS', '+ CREATE A POST', and 'Login'. The main content area features a large satellite image and the text 'Welcome to the Planet Community!' with a search bar. Below this are three main sections: 'Forum' (Start discussions, ask questions, get answers), 'Ideas' (Submit ideas and suggestions to improve Planet's Data and Tools), and 'Product Announcements' (Read the latest news from our product team). At the bottom, there are two buttons: 'Community Introductions' and 'Community Guidelines'.

# + Planet Professional Services

## Deep Domain Expertise

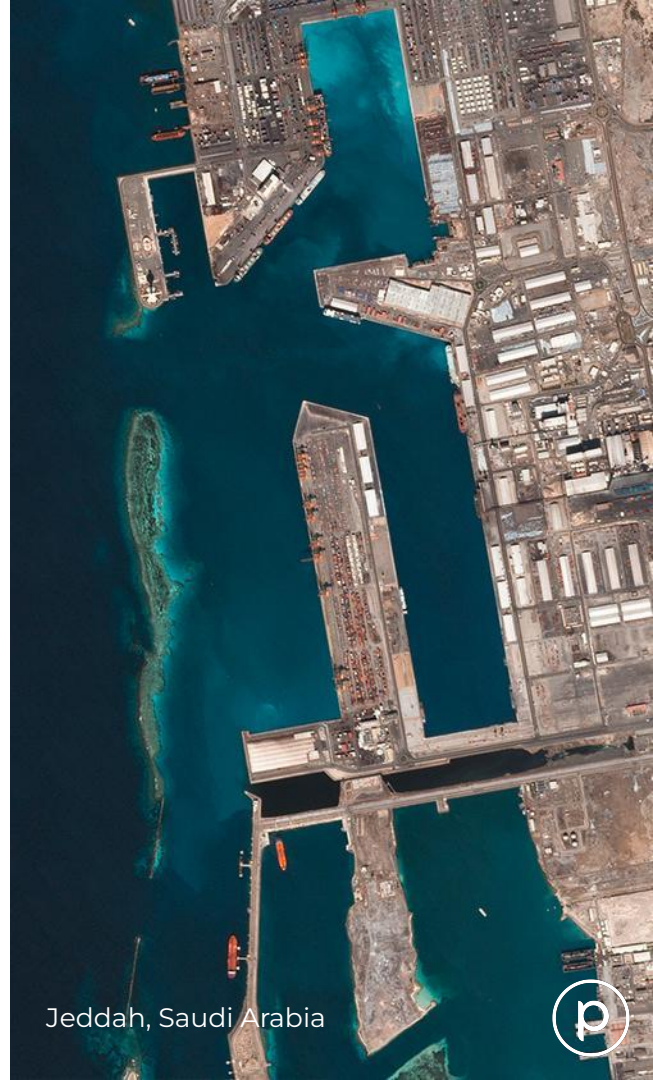
- Planet products and technologies
- Remote sensing science
- Systems integration
- Data management
- Project and program management

Subject Matter Experts deployed for **training**, **advisory**, and **implementation** services

### Mission

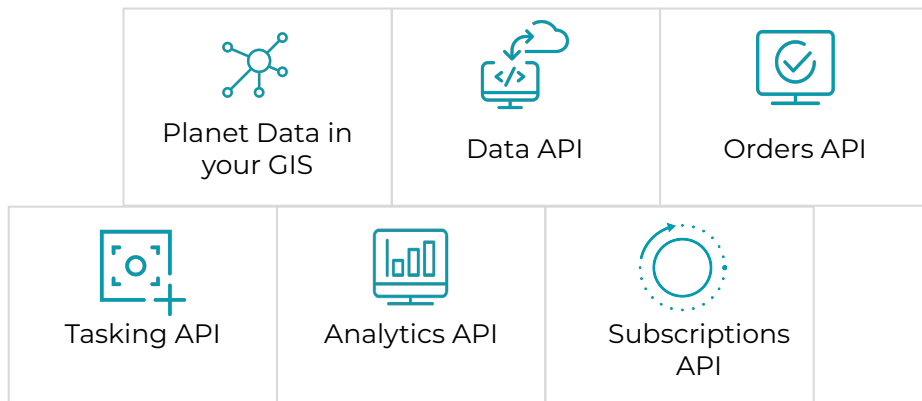
Accelerate Time to Value  
for Key Planet Customers

Jeddah, Saudi Arabia



# + Training Options

Basics below, intermediate and advanced courses also available



[Link](#) to more trainings.





# + Training Options

## Core modules

Module Name	Description	Module type	Duration (Hours)
<a href="#">Planet Overview</a>	Overview of Planet basics. Learn about our constellations, imagery as well as accessing data via Planet Explorer.	Basic	2
<a href="#">Planet WebApps &amp; Integrations</a>	Search and download imagery using Planet web tools as well as Planet Integrations with GIS tools.	Basic	2
<a href="#">Planet APIs</a>	Learn how to leverage Planet's REST APIs, including the Data API, Orders API and others.	Intermediate	3





# + Training Options

## Webinar + Office Hours

- Baselining all attendees with the core modules
  - Planet Overview
  - Planet WebApps & Integrations / Using planet data with your GIS
    - ArcGIS
    - QGIS
  - APIs
- Additional Topics?
  - Python for Geospatial
  - QGIS + Python Spectral Analysis
  - Basemaps
  - GEE
- Timing & garnering attendance



# + Welsh Government University Program - Planet Retrospective - E&R

University	Downloads [sqkm]	Basemaps Tile Views	Scene Tile Views	Active Users	Comments
Cardiff University	4,540.00	7832	37584	21	11 users registered pending invitations
Cardiff Metropolitan University	0.00	0	0	1	
Swansea University	159,190.00	11500	36246	26	
University of Wales Trinity Saint David	0.00	2417	13050	5	
University of South Wales	11,151.00	5319	742	13	
Aberystwyth University	255,738.00	11292	71845	17	+86 registered -They will use the data as part of a course exercise
Glyndwr University	0	52	28765	2	
Bangor University	1,030,283,15	10866	56912	16	



# Welsh Government University Program -Planet

## + Retrospective - E&R- Examples of Use Cases

Modelling Arctic Lakes

Early warning protocols for anticipatory action ahead of climate hazards

Pollution monitoring in the Mediterranean Sea

Carbon Stocks Monitoring

Geological mapping of structures and strata outcropping.

Urban and spatial planning

Tree Species Classification

Urbanization of the Global South

LandScape monitoring of industrial areas

LandScape Monitoring - Coal Tips and abandoned mines

Urban areas and heat islands

Land Cover

ML-AI Algorithms testing

Teaching Remote Sensing of Environmental Hazards

Forest Monitoring



# Welsh Government University Program -Planet

## + Retrospective - E&R- Examples of Use Cases

Testing satellite data merging with data from the Imardis Portal

Assess changes in land use and SST in American Samoa

Tracking northern Taiga forest landscapes.

For demonstrating the use of RS via lectures and practical

Assessing Seasonal and drought responses of Amazon forests

Assessing significance of forest type on localised warming effects in Northern boreal forests

Data to be used for analysis/remote monitoring of continuous cover forestry systems in the UK/Europe

Computing Leaf Area Indexes

Land-cover and bio-diversity change in northern Pakistan

Assessing Drought damage to trees in a particular state of Germany

Assess the extent of montane scrub coverage in Scotland and Norway



## Welsh Government University Program -Planet

Retrospective - E&R- Training Summary

- June, 6th 2022. Kick Off the E&R via [EPW](#)
- [7 Trainings delivered](#)
- Bi-weekly support sessions
- Workshop on the 8th,2023 of June at CAT



# + Welsh Government University Program -Planet

## Discussion points

- Trainings-
  - Day /Time of the day
  - Should we repeat some of the basic ones?
- “How to” access requests :
  - Reach out via e-mail to: [thamires@planet.com](mailto:thamires@planet.com) / [m.bernabeu@planet.com](mailto:m.bernabeu@planet.com)
  - Name:
  - Title:
  - E-mail address:
  - Use Case Description:

# Thank you

